

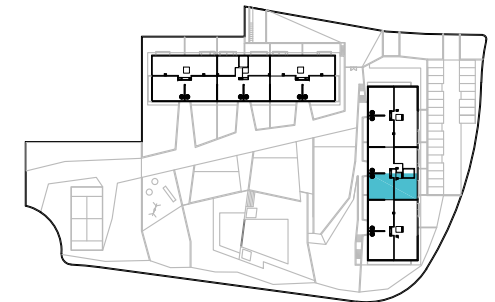
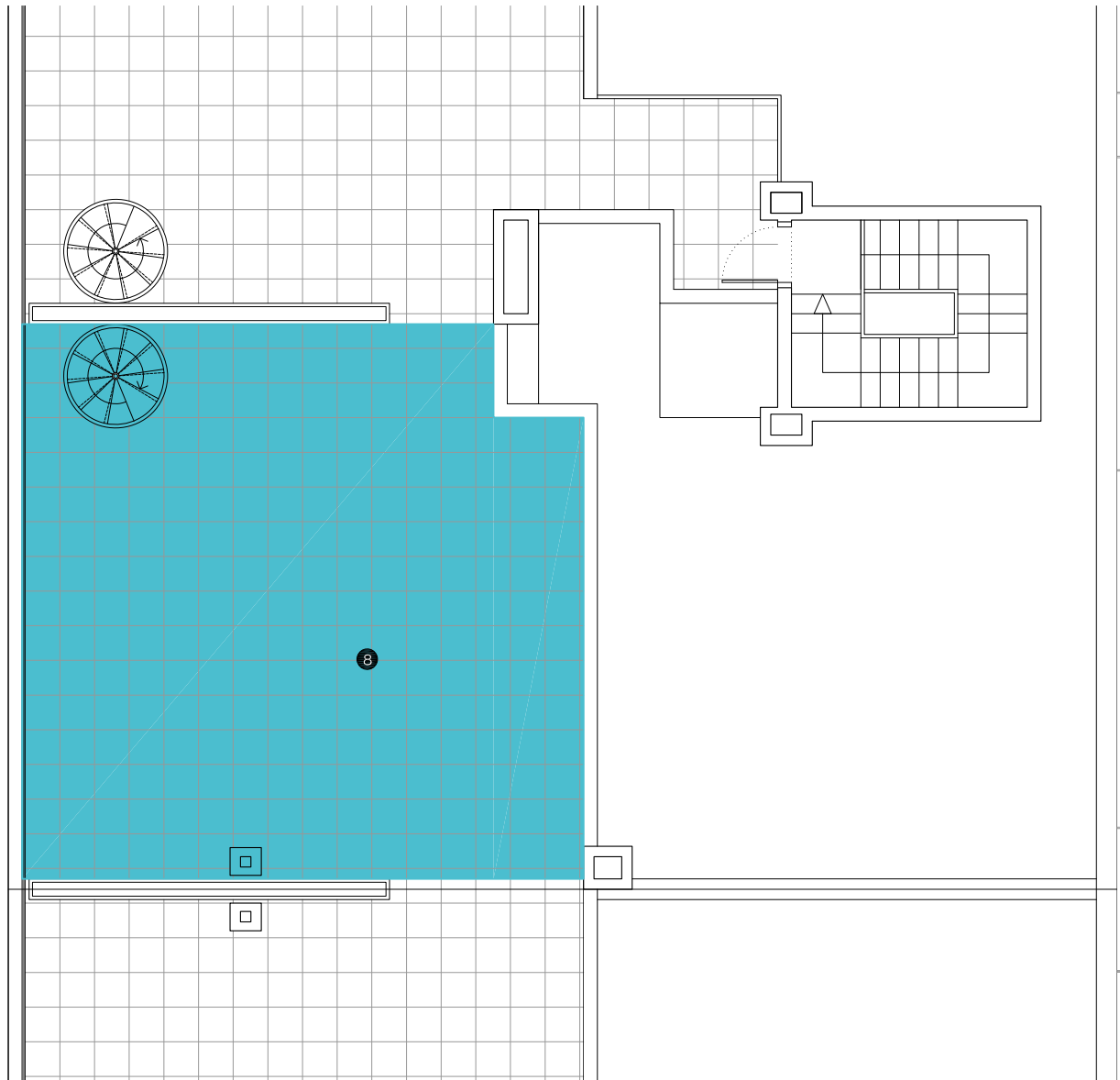
APARTMENT 3.B.2
BLOCK 1
STAIRCASE B
FLOOR - DOOR 3 - 2

1 LIVING-DINING ROOM 33.20 m²
2 HALL 2.00 m²
3 KITCHEN 8.80 m²

4 MASTER BEDROOM 17.80 m²
5 BEDROOM 2 11.80 m²
6 BATHROOM 3.90 m²

7 TERRACE 1 - 2 22.70 m² + 6.00 m²
8 SOLARIUM 63.00 m²





APARTMENT 3.B.2

BLOCK 1

STAIRCASE B

FLOOR - DOOR 3 - 2

1 LIVING-DINING ROOM 33.20 m²

2 HALL 2.00 m²

3 KITCHEN 8.80 m²

4 MASTER BEDROOM 17.80 m²

5 BEDROOM 2 11.80 m²

6 BATHROOM 3.90 m²

7 TERRACE 1 - 2 22.70 m² + 6.00 m²

8 SOLARIUM 63.00 m²

