

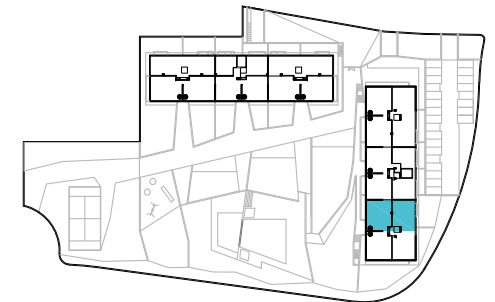
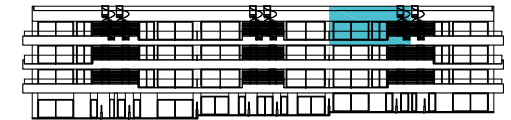
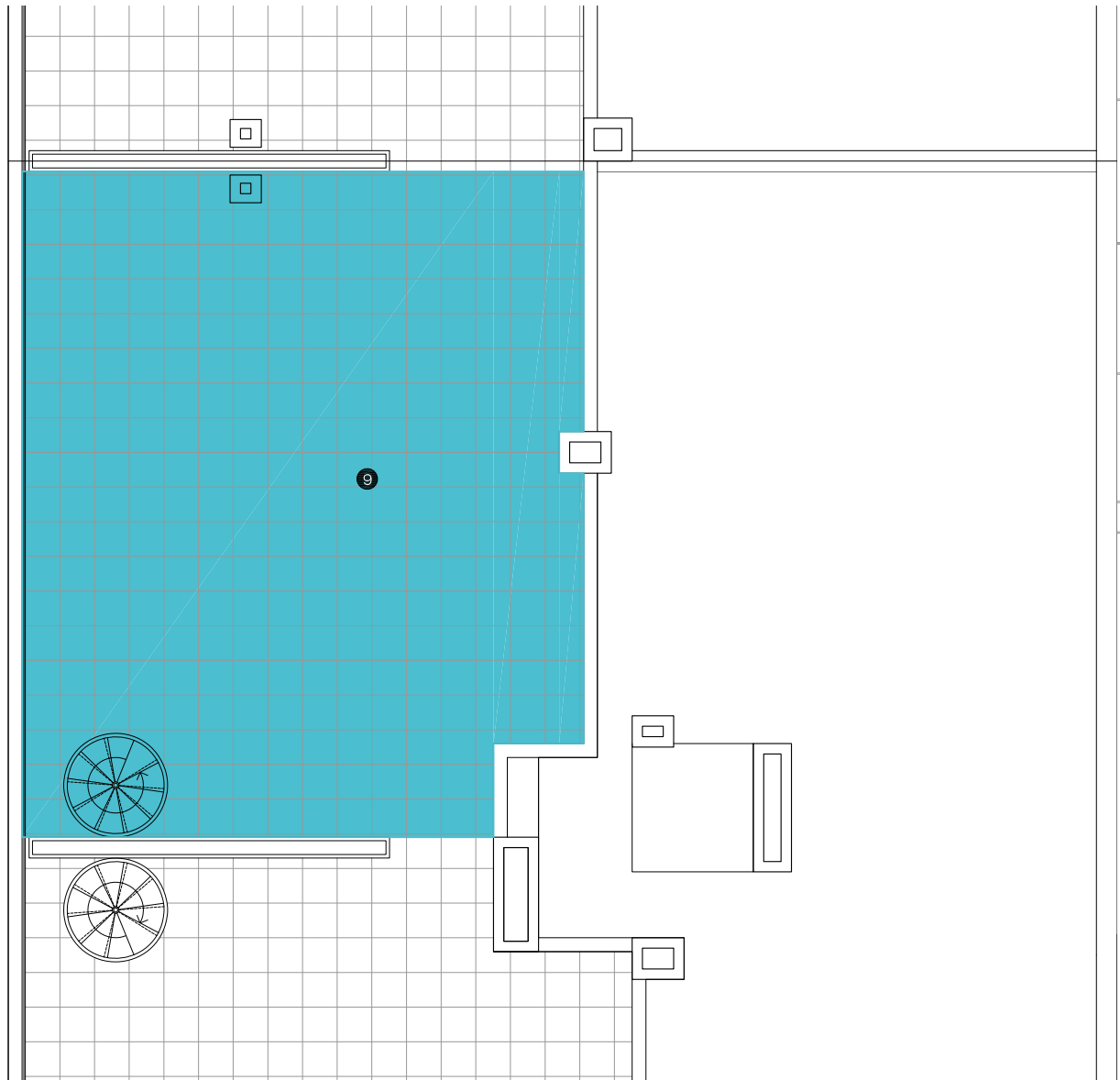
APARTMENT 3.C.1
BLOCK 1
STAIRCASE C
FLOOR - DOOR 3 - 1

1 LIVING-DINING ROOM 37.20 m²
2 HALL 4.30 m²
3 KITCHEN 8.80 m²

4 MASTER BEDROOM 20.70 m²
5 BEDROOM 2 10.10 m²
6 BEDROOM 3 9.80 m²

7 BATHROOM 3.90 m²
8 TERRACE 1 - 2 27.40 m² + 2.20 m²
9 SOLARIUM 76.00 m²





APARTMENT 3.C.1
BLOCK 1
STAIRCASE C
FLOOR - DOOR 3 - 1

1 LIVING-DINING ROOM 37.20 m²
2 HALL 4.30 m²
3 KITCHEN 8.80 m²

4 MASTER BEDROOM 20.70 m²
5 BEDROOM 2 10.10 m²
6 BEDROOM 3 9.80 m²

7 BATHROOM 3.90 m²
8 TERRACE 1 - 2 27.40 m² + 2.20 m²
9 SOLARIUM 76.00 m²

