

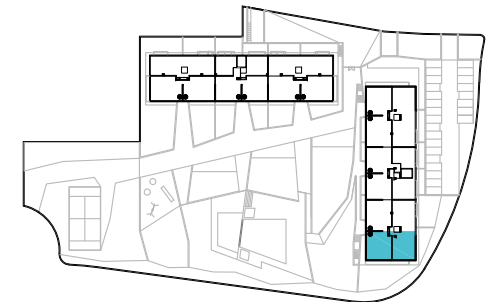
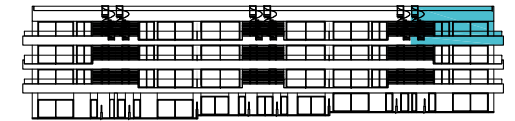
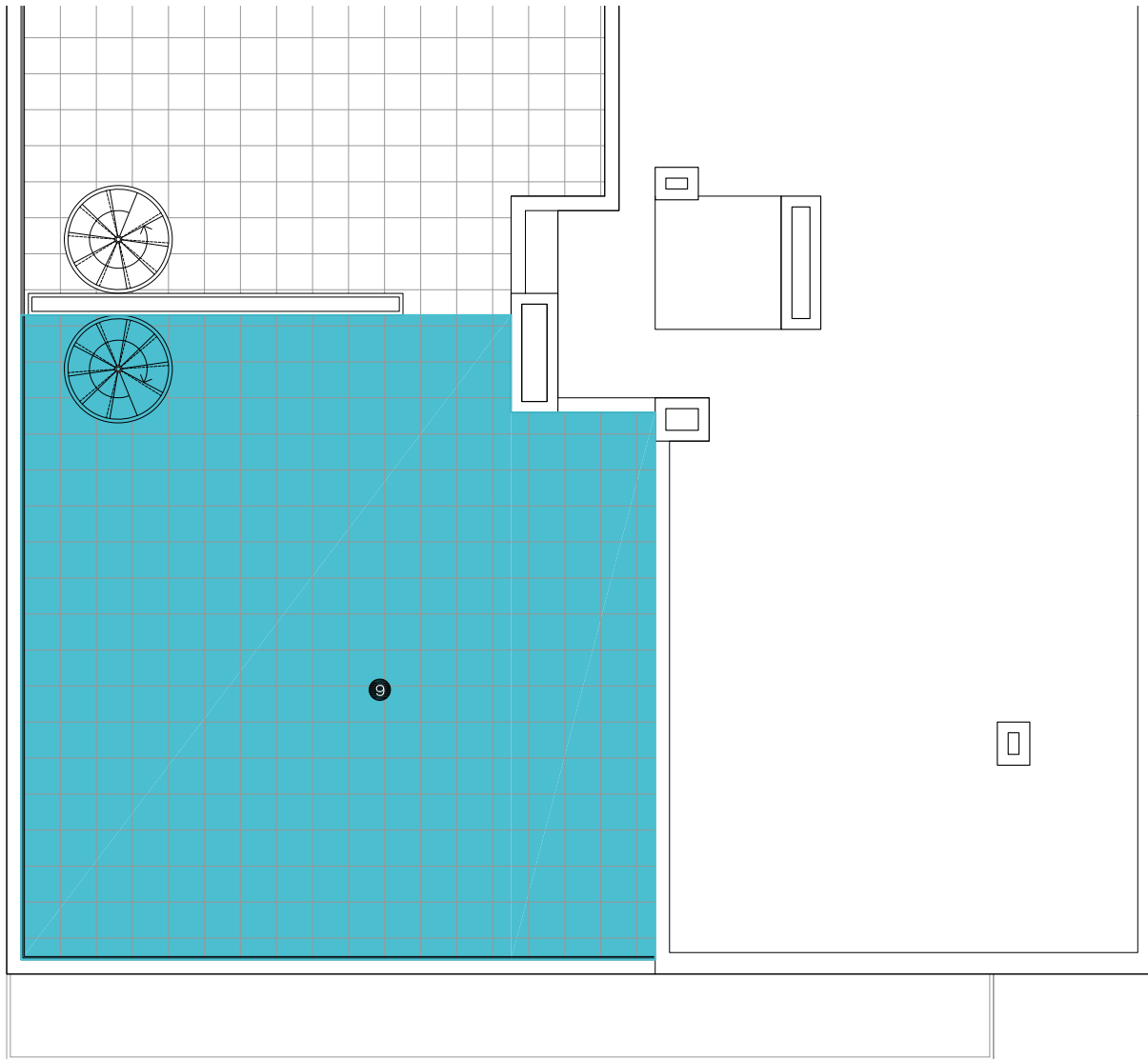
APARTMENT 3.C.2
BLOCK 1
STAIRCASE C
FLOOR - DOOR 3 - 2

1 LIVING-DINING ROOM 32.50 m²
2 HALL 4.20 m²
3 KITCHEN 8.90 m²

4 MASTER BEDROOM 20.20 m²
5 BEDROOM 2 12.60 m²
6 BEDROOM 3 10.70 m²

7 BATHROOM 4.00 m²
8 TERRACE 39.80 m²
9 SOLARIUM 77.10 m²





APARTMENT 3.C.2
BLOCK 1
STAIRCASE C
FLOOR - DOOR 3 - 2

1	LIVING-DINING ROOM	32.50 m ²
2	HALL	4.20 m ²
3	KITCHEN	8.90 m ²

4	MASTER BEDROOM	20.20 m ²
5	BEDROOM 2	12.60 m ²
6	BEDROOM 3	10.70 m ²

7	BATHROOM	4.00 m ²
8	TERRACE	39.80 m ²
9	SOLARIUM	77.10 m ²

