

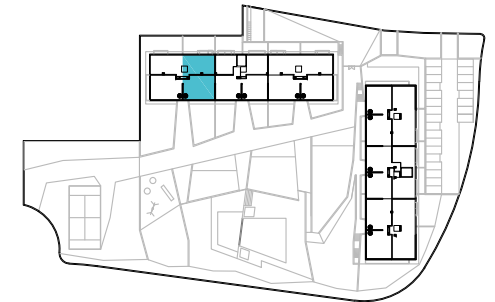
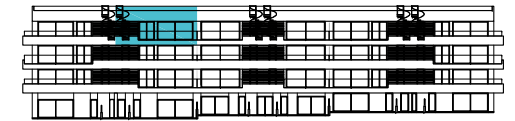
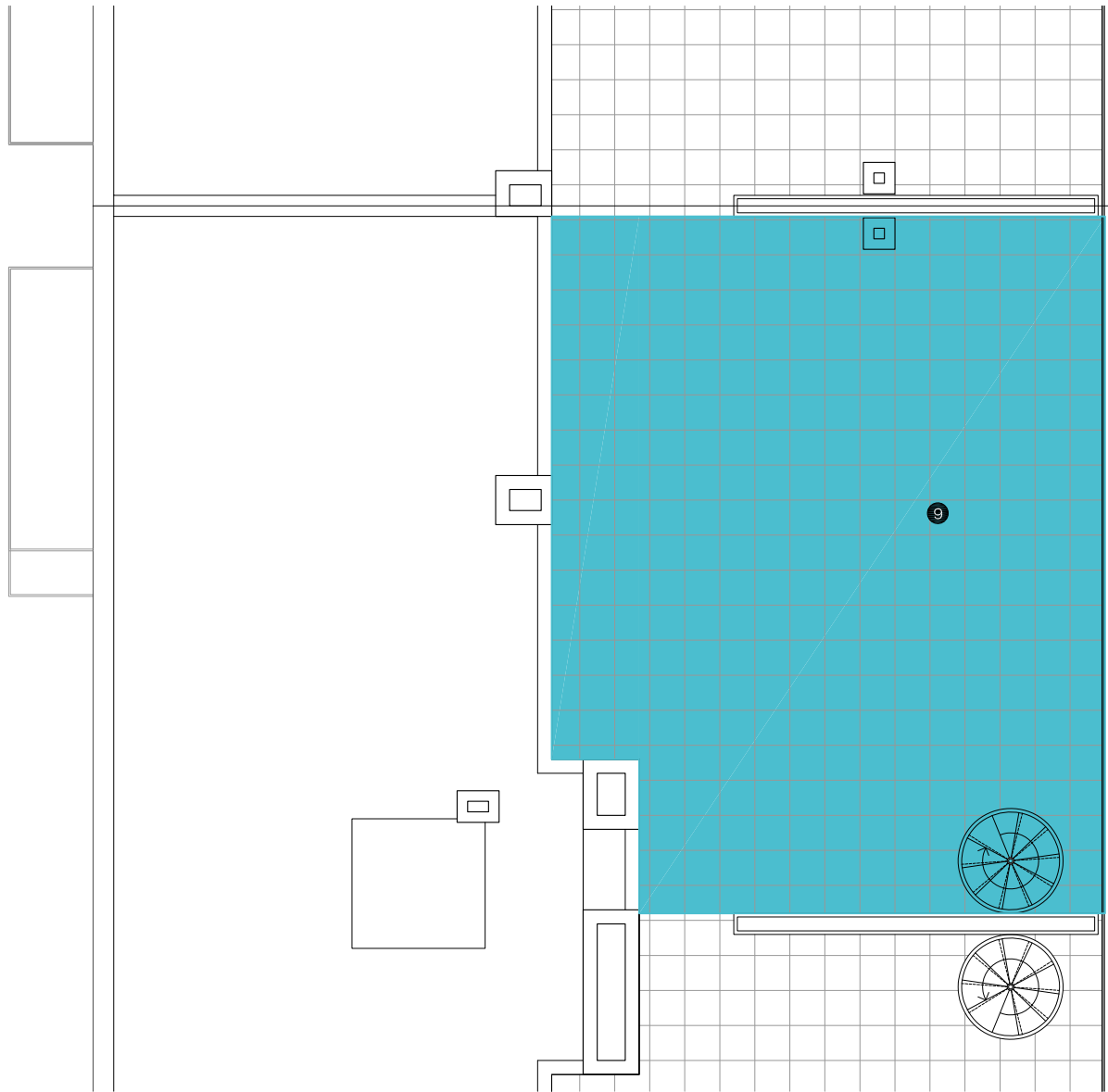
APARTMENT 3.D.2
BLOCK 2
STAIRCASE D
FLOOR - DOOR 3 - 2

1 LIVING-DINING ROOM 38.50 m²
2 HALL 4.30 m²
3 KITCHEN 8.90 m²

4 MASTER BEDROOM 19.60 m²
5 BEDROOM 2 9.10 m²
6 BEDROOM 3 11.20 m²

7 BATHROOM 4.20 m²
8 TERRACE 1 - 2 28.30 m² + 4.70 m²
9 SOLARIUM 75.90 m²





APARTMENT 3.D.2
BLOCK 2
STAIRCASE D
FLOOR - DOOR 3 - 2

1	LIVING-DINING ROOM	38.50 m ²
2	HALL	4.30 m ²
3	KITCHEN	8.90 m ²

4	MASTER BEDROOM	19.60 m ²
5	BEDROOM 2	9.10 m ²
6	BEDROOM 3	11.20 m ²

7	BATHROOM	4.20 m ²
8	TERRACE 1 - 2	28.30 m ² + 4.70 m ²
9	SOLARIUM	75.90 m ²

