

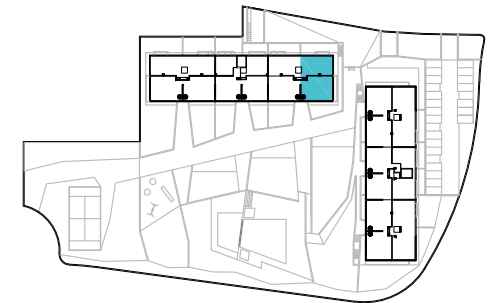
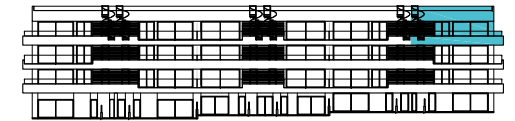
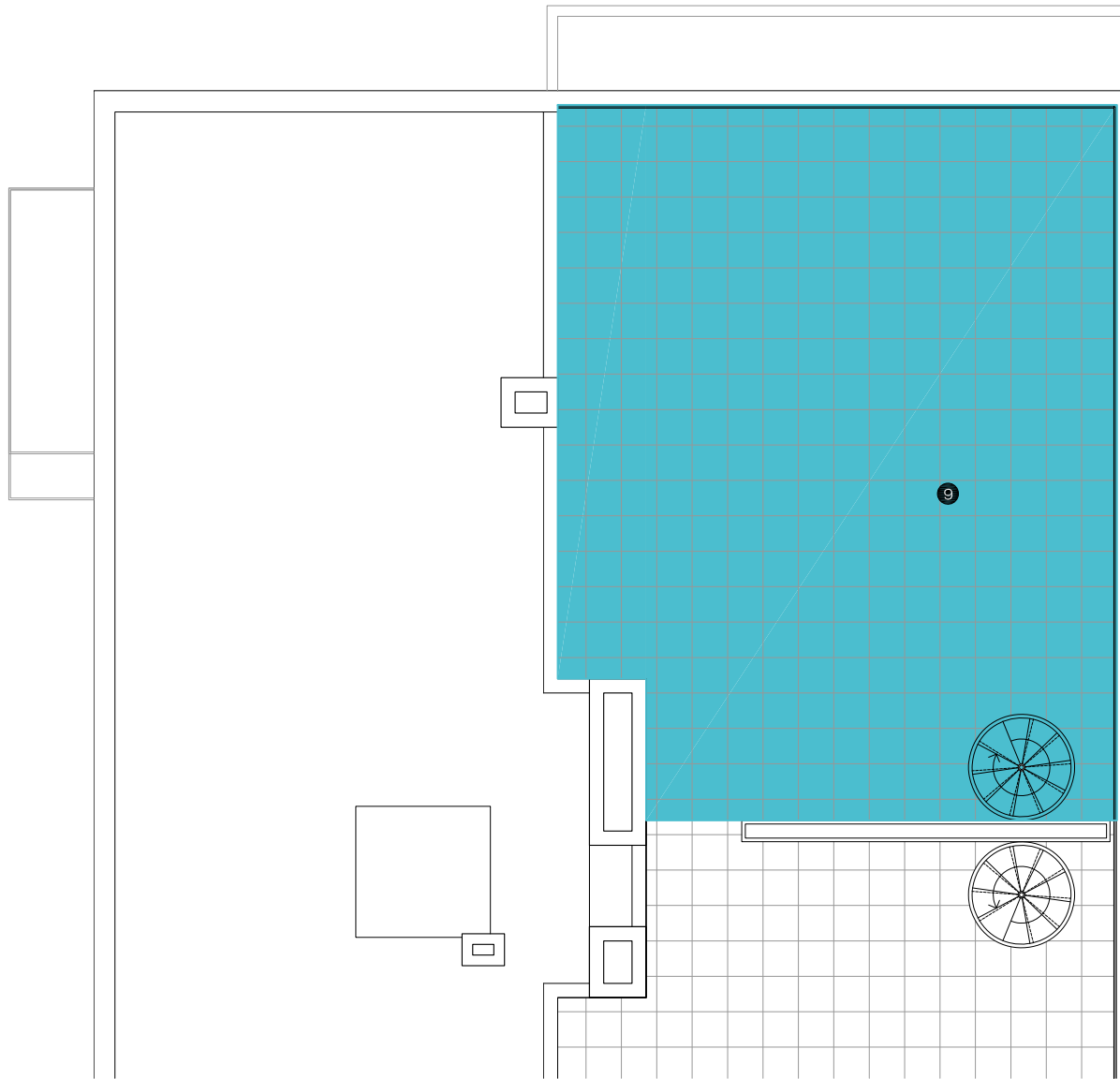
APARTMENT 3.F.2
BLOCK 2
STAIRCASE F
FLOOR - DOOR 3 - 2

1 LIVING-DINING ROOM 38.50 m²
2 HALL 4.30 m²
3 KITCHEN 8.90 m²

4 MASTER BEDROOM 19.70 m²
5 BEDROOM 2 9.10 m²
6 BEDROOM 3 11.20 m²

7 BATHROOM 4.20 m²
8 TERRACE 1 - 2 37.40 m² + 4.30 m²
9 SOLARIUM 77.30 m²





APARTMENT 3.F.2
BLOCK 2
STAIRCASE F
FLOOR - DOOR 3 - 2

1 LIVING-DINING ROOM 38.50 m²
2 HALL 4.30 m²
3 KITCHEN 8.90 m²

4 MASTER BEDROOM 19.70 m²
5 BEDROOM 2 9.10 m²
6 BEDROOM 3 11.20 m²

7 BATHROOM 4.20 m²
8 TERRACE 1 - 2 37.40 m² + 4.30 m²
9 SOLARIUM 77.30 m²

